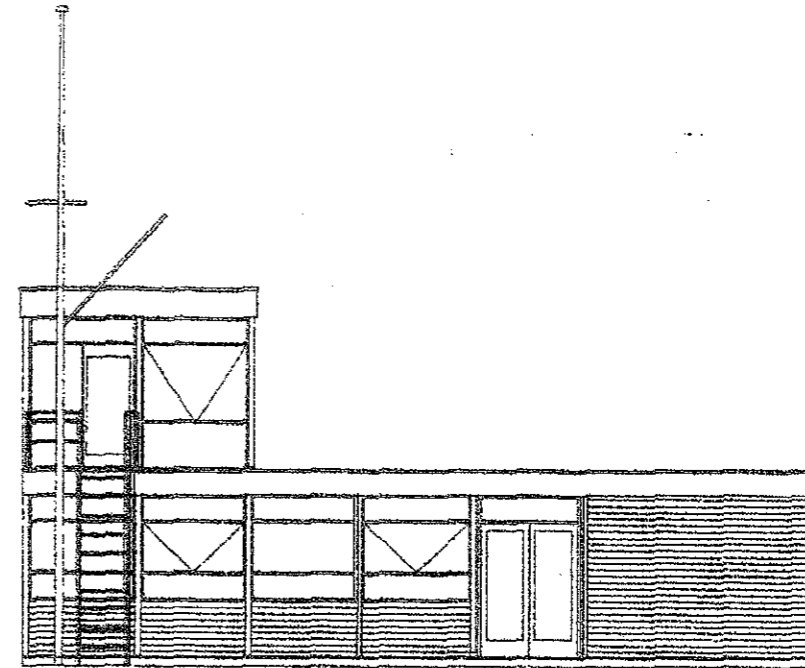
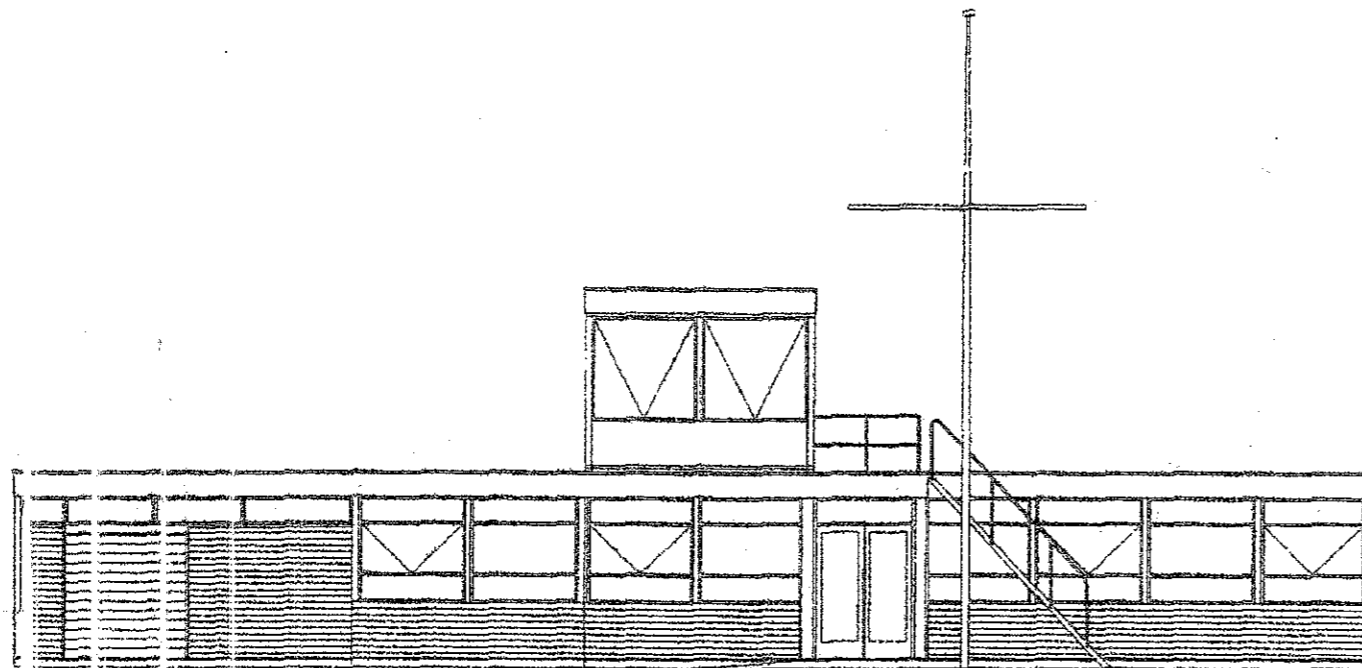


Elevation to Rhu Bay

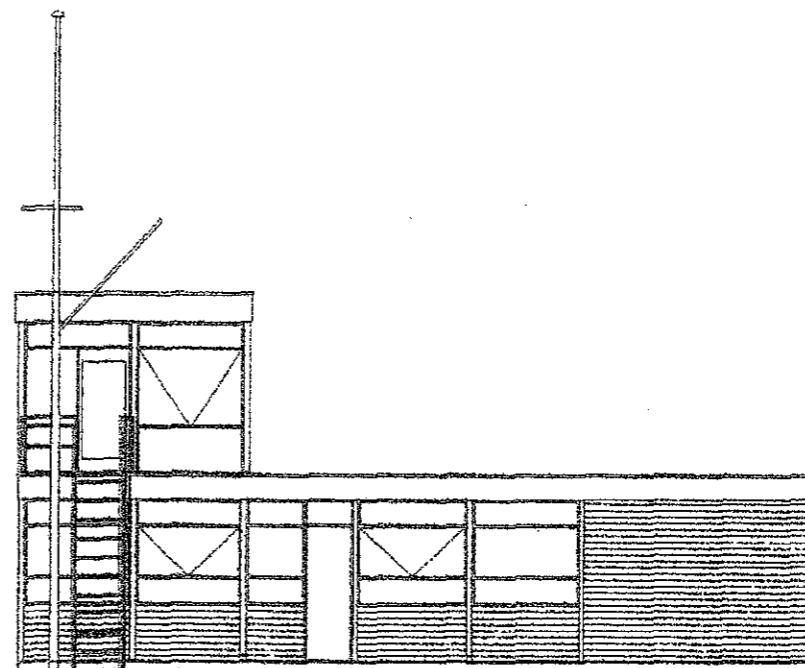


Elevation to South

Clubhouse as built in 1967, also showing flagpole added in 1972



Elevation to Rhu Bay



Elevation to South

Clubhouse after 1974 alterations

**Top drawing shows present clubhouse from 1967 (date built) until 1974**

**Bottom drawing shows present clubhouse after 1974 alterations**

This representation of the above drawing is not to scale.

Plans for both versions of above are on separate sheet.

A.S. Douglas